



'Aho 'o e me'atokoni 'a mamani.

'I he ta'u 2005, na' e faka'ilonga'i fakamāmāni lahi ai 'a e ta'u 25 'o e 'Aho e Me'atokoni 'i mamani. Ko e kaveinga 'o e 2005 ko e "Fakafetongi'aki e ngaahi koloa fakangoue". Na' e fatu e fakakaukau ni ke ne faka'ilonga'i he hisitolia 'a e tokoni 'a e sivilaise ki hono founa ngaahi e me'atokoni, ka e pehe ki he 'ene hiki'i hake e tu'unga fakafetongi e koloa fakangoue ko ha founa 'e tokoni ki hono ta'ota'ofi e fiekaia mo e masivesiva 'o e 'ataakai.

Na' e lava atu e kau 'ofisa mei he ngaahi Potungāue 'a e Pule'anga, hangē ko e Potungāue Mo'ui, Potungāue Toutai mo e Potungāue Ngoue mo e Me'atokoni, ki hono katoanga'i e 'aho 'o e me'atokoni 'i 'Eua 'i he 'aho 14 'o 'Okatopa 2005, 'o

nau kau fakataha ki ai mo e kau toutai , kau ngoue ka e pehe ki he kakai 'o 'Eua. 'I he polokalama 'o e 'aho e me'atokoni na' e kau ki ai e ngaahi fe'auhi feime'atokoni mei 'oseni, feime'atokoni tu'ufonua, lau maa, fe'auhi fakamalohisino ka e pehē ki ha ngaahi faka'ali'ali folouti.

World Food Day

This year 2005 marked the 25th Anniversary of World Food Day. The theme for the year is, "Agriculture and intercultural dialogue" which is intended to highlight the historical contribution of all civilizations to food production and further promotes that sincere intercultural dialogue is a precondition for progress against hunger and environmental degradation.

Senior officers from the Ministry of Health, Ministry of Fisheries, and Ministry of Agriculture and Food commemorated the World

Food Day at 'Eua on the 14th of October 2005, together with the farmers, fishers and the community of 'Eua. The World Food Day program include competitions in cooking seafood & local cuisine, aerobic, poetry citation and float exhibition.



Ko e taha he me'atokoni mei tahi na' e kau ki he fe'auhi he 'Aho e Me'atokoni 'a Mamani 'i 'Eua

Minisita Le'ole'o

Na' e tali lelei 'e he 'Eiki Minisita ki he Ngoue, Toutai mo e Me'atokoni 'a e fakaafe mei he Kautaha ki he Ngoue mo e Me'atokoni 'a e ngaahi Fonua Fakatahataha 'o mamani, ke me'a he Konifelenisi hono 33 'a e Kautaha 'o e Me'atokoni 'a Mamani 'a ia na'e fakahoko 'i Loma he 'aho 19 — 26 Novema 2006.

Ko ia na' e fakanofa ai 'e he Pilinisi Pule Pilinisi Tupouto'a 'a e Sekelitali 'o e Potungāue Toutai Dr.Sione Vailala Matoto ki he lakanga Minisitā Le'ole'o ma'ae Potungāue Ngoue, Toutai mo e Me'atokoni, 'o kamata mei he 'aho 12—26/11/2005.

'Oku 'oatu e talamonu mei he

kaungāue 'o e Potungāue Toutai ki he Sekelitali he fatongia fo'ou kuo fokotu'u ia ki ai.

Acting Minister

The Honourable Minister for Agriculture, Fisheries and Food, Hon Tuita accepted an invitation from the Food and Agriculture Organization of the United Nations to attend the 33rd session of the FAO Conference held in Rome, 19th – 26th November 2005.

Therefore, the Secretary for Fisheries, Toketa.Sione Vailala Matoto was appointed by HRH Prince Regent Tupouto'a to substitute in the post of Minister for Agriculture, Fisheries

and Food with effect from the 12th – 26th November 2005.

The staff of the Ministry of Fisheries congratulate the Secretary during this appointment and wished him all the best.



Ko Toketa. Sione Vailala Matoto, Sekelitali 'o e Potungāue Toutai 'i hono fakanofa ke Minisita Le'ole'o

Dr. Sione Vailala Matoto.

Volume 4 , Issue 4

Ongoongo 'a e Potungāue Toutai

he Kuata Tisema 2005

'Aho 'o e me'atokoni 'a mamani / World Food	1
Minisita Le'ole'o / Acting Minister.	1
Savea 'i Ha'apai / Survey in Ha'apai	2
Fakatokanga ki he 'Uo / Lobster Man	2
Maketi ika Tu'imatamoana / Tu'imatamoana Fiaha	2
Vakai'i e founa fakahoko fatongia / Introducing a Performance Ap-	3
Toutai ta'efakalao / Illegal Fishing.	3
Palani Pule ki hono toutai'i e Tuna 'i Tonga / National Tuna Management & Development	4
Palani Pule ki hono toutai'i Limu Tanga'u / Seaweed Management & Development Plan.	5
Tu'utu'uni ki he Hakau Mineva ko e feitu'u Pule'i mavahe / Decision Regarding Minerva Reef as a special Management	6
Uike ki hono sivi e ngaahi fakatau'anga Ika. / Inspection Week.	7
Ola lelei e fakafanau e Vasuva / Spawning giant Clam was successful	8

Savea 'i Ha'apai.

Na' e fakapa'anga 'e he Tonga Fisheries Project mo e Potungae Toutai 'a hono savea'i e potu tahi 'o 'O'ua, 'Uiha mo Felemea.

'Oku 'i ai e 'amanaki lelei ki he savea ni, 'e malava ke ne tanaki mai ha ngaahi fakamatala falala'anga 'e ala tokoni ki hono fokotu'utu'u mo fa'u e palani ki he ngaahi Feitu'u Toutai'anga ke Pule'i Makehe 'e he ngaahi kolo, pea kau ki ai mo ha ngaahi fakamatala 'e tokoni ki hono vakai'i 'aki e tu'unga lolotonga 'oku 'i ai e me'a mo'ui 'i

honau potu tahi takatakai.

Survey in Ha'apai

Tonga Fisheries Project and the Ministry of Fisheries co-funded a survey for the waters of the islands of 'Uiha, Felemea and 'Oua.

The survey is anticipated to gather better and reliable information which will assist in the designing and formation of a plan for Special Management areas. In addition, information obtained from the survey will contribute to observing and monitoring existing resources in their surrounding waters.



Stone Mailau, Moana Nau, Tala'ofa Loto'ahea mo Talia'uli Napa'a lolotonga e savea



Tala'ofa Loto'ahea 'i hono savea'i e potu tahi 'o 'O'ua

Fakatokanga ki he 'Uo

'Oku tapui 'e he lao hono toutai'i e 'uo 'oku kei fakafua, mo e 'uo 'oku iiki ange hono loloa he 7.5cm. Na' e tokoni mai 'a e Tala-fekau lahi 'Aositelelia mo e Tonga Fisheries Project 'o fakapa'anga ha ki'i faiva nounou, 'o fakataumu'a ke fakamanatu ki he kakai 'a e mahu'inga ke malu'i mo fakatolonga e 'Uo mo hono fa'ahinga.

'Oku fakamalo lahi heni 'a e Potungae ki he to'utupu mei Veitongo ki he 'enau tokoni 'o fakatata'i e ki'i faiva ni. Ko 'enau tokoni 'oku fu'u 'aonga lahi ia ki hono 'oatu e

fekau mahu'inga ni ki he kakai 'o e fonua.

Lobster Man Production

It is prohibited to catch lobsters with eggs, or undersize lobsters below 7.5 centimeters. The Australian High Commission and Tonga Fisheries Project co-funded the production of a short video which is aimed at reminding the public about protection and conservation of all lobster species.

The Ministry of Fisheries would like to note here the effort of the Veitongo Youth who were actors in the video production. Their contribution was essential to relaying im-

portant messages to the public.



To'utupu 'o Veitongo 'i he 'enau fakatata'i e Lobsterman

'Ikai tali e fokotu'u e Global Fishing

Na' e fakahoko ha fakataha mo e kau toutai 'o Tongatapu, kau fakafongga mei he ngaahi kautaha toutai taautaha pea mo e Sekelitali 'o e Potungae 'i he 'ulu'i 'ofisi 'i Sopa 'i he 'aho 26/10/2005, ke alea'i e kole 'a e Global Fishing Industry ke nau fakalelei'i mo to e langa'i hake e Maketi ika Tuimatamoana ki ha tu'unga 'oku fakafiemalie ange.

Ko ia ne hoko atu e alea he vaha'a 'o e kau fakafongga mei he ngaahi kautaha toutai taautaha, pea na 'e loto ai e fakataha ke 'oua 'e kau ha kautaha taautaha hange ko e Global Fishing Industry

hono fakalele e Maketi Tuimatamoana. Pea 'i hono aofangatuku na' e 'ikai tali 'a e fokotu'u ke fakalelei'i 'a e maketi Tuimanamoana.

Global Fishing Industry proposed denied

A meeting between fishermen of Tonga tapu, fishing industries representatives, and the Secretary for Fisheries was held at the head office in Sopa in October 26th to discuss request from the Global Fishing Industry to renovate and reconstruct the Tu'imatamoana Fish Market to satisfactory standard.

Following an extensive discussion between representatives of the industry, members agreed that a single company such as Global Fishing Industry should not be given too

much influence in managing Tu'imatamoana Market. Therefore the proposal for upgrading Tuimatamoana Market was denied.



Ko Pelenaise Kofutu'a ko e fefine toutai mei 'Uiha Ha'apai 'i he maketi ika Tuimatamoana

Vakai'i e founa fakahoko fatongia.

Ki hono fakalalaka e tu'unga fakahoko fatongia 'a e kau ngaue, ko e founa fo'ou ia na'e tuku mai ke 'ahi'ahi'i 'e he Potungae Touta 'i Novema, 'a ia ko e kongia ia 'o e tokoni 'a e Tonga Fisheries Project.

'I he founa ni 'oku malava ke ne vakai'i kotoa 'a e fakahoko fatongia 'a e kau ngaue he ngaahi tu'unga takitaha.

'I he founa fakalelei ko 'eni 'oku kau ai 'ete 'uluaki vakai'i fakafo'ituitui pe 'ete fakahoko ngaue, ka e pehe ki hono vakai'i kita 'e hoto taki, ka e 'oua ke na felotoi ki he aofangatuku hono vakai'i 'ete fakahoko fatongia.

'Oku kongia ua 'a e ngaue ki he founa fakalelei ko 'eni, 'a ia 'oku 'uluaki vakai'i 'e he taki 'o e ngaahi va'a takitaha 'a e fakahoko fatongia 'ene kau ngaue takitaha, pea vakai'i 'e he 'ulu 'o e ngaahi va'a 'a e fakahoko fatongia e kau taki he ngaahi va'a takitaha.

'Oku 'i ai e timi 'oku nau pule'i e ngaue ni, 'oku kau ki ai e 'ulu 'o e ngaahi tafa'aki mo Mr. Douglas Ruhen (ko e mataotao ki he kaungaue) 'a ia na'e tali 'e he Sekelitali 'o e Potungae Toutai ke ne taki hono fakataukei'i 'a e ngaue ni. Na' e tali 'e he Sekelitali 'o e Potungae 'a e fokotu'u

fakaangaanga ni, pea ke lele ia he kuata ua 'o e 2005 'o fakakakato kimu'a he ta'u fakapa'anga 2006/07.

'I hono fakataukei'i e founa fakalelei fo'ou ko 'eni 'oku malava ai ke fakalahi e 'ilo 'o tatau pe he supavaisa mo e kau ngaue ki he founa ni.

'I he founa fo'ou ni 'oku 'amanaki ke ne faka'ata mai e fakahoko fatongia totonu 'a e kau ngaue, pea 'e 'a mei ai e kau ngaue 'osikiavelenga ke fai ha tokanga makehe kiate kinautolu 'o fakapale'i.

Introducing a Performance Appraisal

Improvements to staff performance appraisal method was introduced to the Ministry of Fisheries in November as part of the capacity building component of the Tonga Fisheries Project.

The improved methods will contribute to better monitor staff performance at all levels. Improvements in the appraisal methods include self appraisal and a conciliated approach where supervisor and staff mutually agree to an appraisal outcome.

There are two tiers proposed for staff appraisal methods. Heads of Sections will appraise their staff and the Head of Sections will subsequently be appraised by Heads of Divisions.

The Senior Management Team which consists of the Heads of Divisions and Sections, Mr. Douglas Ruhen (HR specialist), has proposed piloting of this new appraisal method. The Secretary for Fisheries accepted the proposal for the trial period to begin during the second quarter of 2005 and complete by the new financial year 2006/07.

Piloting the new appraisal methods will increase both supervisor and staff familiarity with the requirements of the new appraisal system which is expected to reflect accurately staff performance and also highlights outstanding performers who deserve to be rewarded for their outstanding performance.



Kau ngaue 'a e Potungae Toutai, Lupi Kolo, Makeleta Vaikaka, Mandie Finau, Lupe Fakaletu mo Salome Tupou

Toutai ta'efakalao.

Na' e puke mai 'e 'Ofa Fakahau mo Palu Faupula ko e ongo 'ofisa toutai ha kau tangata toutai kehekehe 'e toko 3, 'i Tongatapu ni mo 'Eua. Ko e kau toutai ni na'a nau toutai mai e e fanga ki'i 'uo iiki 'a ia 'oku tapui he lao toutai.

Ko e fo'i 'uo ami 'e 5 mo e ngaahi 'uo iiki 'e 7 'a ia na' e si'isi'i ange honau loloa he senitimita 'e 7.5. 'Oku kei hokohoko atu pe 'a e polokalama ki hono sivi faka'aho e ngaahi ma'keti fakatau'anga ika, ngaahi falekai, ko e kongia ia 'o e polokalama ki

hono fakamalohi'i 'o e Lao ke fakapapau'i 'oku a'u e taumu'a ki hono fakatolonga e me'amo'ui 'i 'oseni.

Illegal Fishing

Mr. 'Ofa Fakahau and Palu Faupula, Fisheries Officer, seized catches of 3 different fishermen from Tongatapu and 'Eua. These fishermen harvested undersized lobsters which are prohibited under the Fisheries Regulation.

Catches that were undersized included 5 lobsters with eggs plus 7 small lobsters under 7.5 cm in size. A daily inspection at

local fish markets and restaurants are carried out as part of a rigorous compliance program to ensure that conservation objectives are achieved.



'Uo ta'efakalao na' e puke mai 'e he Potungae



Palani Pule ki hono Fakalalakaka e Toutai Tuna 'i he potu tahi 'o Tonga.

Ko e Palani Pule ki hono Fakalalakaka e Toutai Tuna na' e tali ia 'e he 'Eiki Minisitā ki he Toutai Pilinisi 'Ulukalala Lavaka Ata 'i he 'aho 8 'o Sune 2001.

Ko e Palani ko 'eni ko e ola ia e fengae'aki 'i he vaha'a 'o e FFA, SPC, Potungāue Toutai mo e ngaahi kautaha toutai taautaha.

Hili ia na' e fokotu'u leva e Komiti Pule 'o e Toutai Tuná, ke ne fakahoko lelei e ngaahi palani ka e pehe ki he lipooti 'a e tu'unga 'oku a'u ki ai hono pule'i e tuna 'i Tonga ni.

Ko e kau memipa ki he Komiti 'oku kau ki ai e ngaahi Potungāue ko 'eni :- Potungāue Kasitomu, Potungāue Maliní mo e Taulanga, Fefakatau'aki mo e ngaahi Ngaue'anga, Potungāue Pa'anga, Taumalu'i Fonua, fakafofonga mei he Kautaha Toutai 'a Tonga, fakafofonga mei he Kautaha 'oku nau uta e Tuna ki tu'apule'anga, fakafofonga mei he kautaha 'ikai faka Pule'anga mo e fakafofonga mei he kau toutai sipoti.

'Oku faka'ai'ai 'e he palani ke toe ngaue vaofi ange e Potungāue Toutai mo e ngaahi kautaha toutai taautaha. 'I he lolotonga ni 'oku fakangatangata e vaka toutai tuna ki he vaka pe 'e 30, pea ko e vaka pe 'e 17 (15m—30m) toutai fakalotofonua 'oku kei 'aonga 'enau laiseni.

'Oku 'i ai e Komiti Fakafonua ki hono Le'ohi mo Muimui'i 'a e ngaahi vaka 'i tahi, 'a ia 'oku fokotu'u ia 'i he malumalu 'o e Komiti Pule ki hono Fakalalakaka 'o e Toutai Tuna, pea 'oku memipa ki ai e Potungāue Taumalu'i fonua, Potungāue Polisi, Potungāue Lao mo e Potungāue Toutai. 'I he malumalu 'o e komiti ni, 'oku 'i ai mo e ki'i Komiti Fakahoko Ngāue, 'a ia 'oku nau tokanga'i e ngaahi launga 'o fekau'aki mo e laiseni mo hono vakai'i e foomu ngaue 'a e ngaahi vaka toutai.

- Neongo na' e 'i ai e holo he tu'unga toutai tuna he ta'u kuo hili , ka 'oku kei fakapapau'i pe 'e he Komiti Pule ki he Fakalalakaka e Toutai Tuna 'oku tupu mamalie pe ki 'olunga 'a e ola 'o e toutai. Pea 'ikai ngata ai ka 'oku mahino mai 'Oku taumu'a pē e ngaahi kautaha ia ki he Takuo mo e Piki'ai ka e si'isi'i ki he 'Alapakoa, pea 'oku 'ikai mahino pe 'e to e foki mai e ngaahi vaka toutai muli 'i he kaha'u pe 'ikai.

National Tuna Management and Development Plan:

The National Tuna Management and Development Plan was approved on 8th June 2001 by then Minister for Fisheries, HRH Prince 'Ulukalala Lavaka Ata.

The Plan is an outcome of collaboration between FFA, SPC, Ministry of Fisheries and Tonga's fishing sector.

A Tuna Management Committee was subsequently formed to monitor execution of the Plan and report on the status of tuna resource management in Tonga.

Members of the Committee include the following Ministries: Customs; Marine & Ports; Labour Commerce & Industries; Finance; Tonga Defense; and representatives of Tuna exporters Association; Non Government Organisation; and Sport fishing.

The Plan calls for better cooperation between the Ministry of Fisheries and fishing sector. A moratorium of 30 vessels is currently enforced but only 17 locally based fishing vessels (of 15m—30m size) hold current valid licenses to fish tuna.

A National Monitoring and Surveillance Committee operates under the direction of the Tuna Management Committee in which the following agencies are members: Tonga Defense Services, Ministry of Police, Crown Law, and Ministry of Fisheries.

A task force was also establish under this Committee to address operational issues relating to compliance with conditions of fishing licenses, and reviewing fishing vessels' logbooks.

Despite the decline of tuna catch in recent years, the Tuna Management and Development Committee is optimistic that catches will slowly continue to rise. It also noted that companies have targeted yellow fin and big eye rather than albacore; and that locally foreign based vessels are not likely to be back to Tonga in the near future.



Teuteu'i e ngaahi fo'i 'Alapakoa ko 'ena ke uta atu ki tu'apule'anga



Ko hono faka'ai'ai 'eni 'o e Tuna 'o teuteu ke uta atu .



Ko hono fakatau atu 'eni he South Pacific Resource



Ko teuteu'i e tuna 'a e 'Alatini Fisheries ke uta atu

Palani Pule ki hono fakalalakaka e toutai limu tanga'u.

Na' e tali 'e he 'Eiki Minisitā ki he Toutai Hon. Tuita he 'aho 25 'o Me 2005 'a e Palani Pule ki hono Fakalalakaka e Toutai Limu Tanga'u. Ko e palani ko ení na' e fa'u 'o fakataumu'a ke tu'uloa 'e toutai limu tanga'u 'i ha taimi loloa, pea ke monu'ia ai e kakai mei ngaahi feitu'u 'uta, ka e pehē ki he kau toutai fakalotofonua mo honau ngaahi fāмили.

Ko e fa'ahi ta'u 'oku toutai'i ai e limu tanga'u ko e vaha'a 'o Sepitema ki Tisema.

'I he Palani 'oku ne tuhu'i pau mai ai e ngaahi founga toutai mo e naunau toutai 'oku ne uesia 'a e mo'ui e limu 'i he taimi 'oku toutai'i ai, 'a ia ko e leiki, sipeiti, savolo mo ha fa'ahinga me'angāue pē 'oku ngāue'aki ki hono tata'aki e limu tanga'u mei tahi.

'Oku 'i ai mo e ngaahi palopalema 'oku lolotonga 'asi mai 'o hangē :

- Ko e fa'ahi ta'u limu 'o e ta'ú ni 'oku 'ikai a'u ia ki he tu'unga na' e a'u ki ai he ta'u kuo hili.
- Ko e hoha'a he ngahi Kautaha Limu na'a uesia 'enau kautaha 'I ha taimi loloa 'i hono ta'ofi fakataimi he 'uike 'e 2 'a hono fua atu e limu tanga'u, tupu mei he 'ikai matu'otu'a fe'unga e limu.

'Oku 'i ai leva 'a e ngaahi palani 'oku toka mei mu'a ki he kaha'u.

- Ke faka'ai'ai e ngaahi kautaha mo e kakai 'o e koló ke nau faama'i e limu tanga'u.
- Ke kei hoko e limu tanga'u ko e tokoni faka'ekonomika ki he kakai 'o e ngaahi tukui kolo 'i 'uta.

'Oku 'i ai e ngaahi palani fakaangaanga kuo 'osi fa'u 'o kau ki ai ;

- Palani Pule ki hono fakalalakaka 'o e toutai taumata'u loloto.
- Palani Pule ki hono Fakalalakaka e Toutai e Ika Mo'ui mo e Maka Mo'ui.
- Palani Pule ki hono Fakalalakaka e toutai Mokohunu.
- Palani Pule ki hono Faama'i e me'a mo'ui 'o 'oseni.

Seaweed Management & Development Plan:

The Hon. Minister of Fisheries, approved the Seaweed Management & Development Plan on 25th of May 2005. This plan sets out objectives for the long term sustainability of seaweed fishery in Tonga which serves to benefit rural communities and local fishers and their families.

Seaweed harvesting is seasonal, mainly during the period of September to December.

In the Plan various fishing methods and gears are stipulated as harmful to seaweed development and harvesting and these include dredges, forks, spades, rakes, shovels or other hand held digging instrument.

Some of the problems currently addressed include :

- *The harvest for this season has not reached the height and expectations achieved last year.*
- *Harvesting season was closed for two weeks due to immaturity of stock which threatens long term sustainability of the industry*

The Plan also :

- *Encourages companies and communities to farm seaweed.*
- *Anticipates that Seaweed industry will*

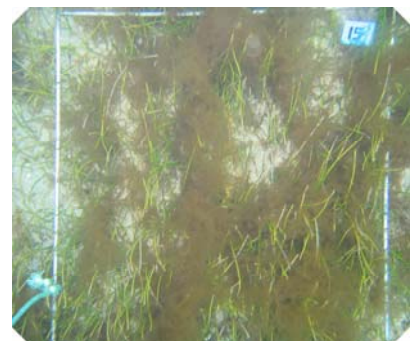
remain and continue to be an economic contribution to rural communities.

Other fishery Plans currently in draft form includes;

- *Deepwater Dropline Snapper Fishery Management & Development Plan*
- *Marine Aquarium Fishery Management and Development Plan.*
- *Bech der mer Management and Development Plan.*
- *Aquaculture Management Plan.*



Ko e ngaue'anga limu 'eni 'a e Tangle Nano 'i Sopo



Ko e limu tanga'u 'i Felemea



Ko e naunau toutai limu 'eni 'oku ngofua ke ngaue'aki

Tu'utu'uni fekau'aki mo e hakau Mineva, ke hoko ko e feitu'u Pule'i mavahe.

'I he 'aho 15 'o 'Okatopa 2005, na' e fakaha Faka-Pule'anga ai ke hoko 'a e Hakau Mineva ko e Feitu'u Pule'i Makehe, pe ko ha feitu'u ke fakatolonga mo fakaili ai e me'a mo'ui 'o 'oseni, pea 'ikai ko ia pe ka 'oku talifaki ia ki he ngaahi toutai fakalotofonua pe, ka 'oku 'I ai pe hono founa ke fou mai e kole pe 'e tali 'e he 'Eiki Minisita ki he Toutai.

Ko e fakangatangata leva 'eni ki he Hakau Mineva :-

1. Ko e 'elia 'o Teleki Tokelau (Hakau Mineva Tokelau) 'oku kau ki ai 'a e 'elia 'oku fua 'aki 'a e laine 'oku maile notikolo 'e 12 hono loloa, 'oku ne takai'i 'a Teleki Tokelau ke ne fakahā 'a e potu tahi faka-fonua, 'o lau mei he tafa'aki ki tahi 'o e laine 'o e ma'ulalo taha 'o e tahi he hakau, 'i hono fakahā 'e he ngaahi faka'ilonga fe'unga 'i he ngaahi saati faka-'ofisiale 'oku taki 'e he Pule'anga 'o Tonga, pea ko e hakau 'oku tu'u fakatatau ki hono faka'ilonga' 'e he Royal Australian Survey Corps 'i he 1981 'i he ngaahi poini 'e ua, ko e tu'u 'anga tu'uma'u 'i he tu'u'anga fakasiokalafi ko e 23° 38' 11.1513" S, pea mo e 178° 56' 28.9903" W pea mo e tu'u'anga ngāue'i 'i he tu'u'anga fakasiokalafi 23° 39' 16.75550" S pea mo e 178° 56' 20.2200" W;

2. Ko e 'elia 'o Teleki Tonga (Hakau Mineva Tonga) 'oku kau ki ai 'a e 'elia 'oku fua 'aki 'a e laine 'oku notikolo 'e 12 hono loloa

'oku ne takai'i 'a Teleki Tonga ke ne fakahā 'a e potu tahi fakafonua 'o lau mei he tafa'aki ki tahi 'o e laine 'o e ma'ulalo taha 'o e tahi he hakau, 'i hono fakahā 'e he ngaahi faka'ilonga fe'unga 'i he ngaahi saati faka-'ofisiale 'oku tali 'e he Pule'anga 'o Tonga, pea ko e hakau 'oku tu'u fakatatau ki hono faka'ilonga' 'e he Royal Australian Survey Corps 'i he 1981 'i he ngaahi poini 'e ua, ko e tu'unga tu'uma'u 'i he tu'unga fakasiokalafi ko e 23° 56' 41.3931" S, pea mo e 179° 08' 15.4517" W pea mo e tu'u'anga ngāue'i 'i he tu'unga fakasiokalafi 23° 55' 46.7660" S pea mo e 179° 05' 33.7460" W.

'Oku fakafuofua ko e fanga ki'i vaka toutai pe 'oku ma'ulalo ange hono loloa he mta 'e 11 'oku ngofua ke nau toutai he hakau Mineva, ka 'oku 'i ai e founa kuo pau ke fakafou mai ai ho'o kole, 'o kau foki ai mo e lahi e 'aho ke ke toutai ai 'i hono fakakaukau'l ho'o kole.

Ko e makehe 'anga 'o e Hakau Mineva he 'oku kei mahu ai e ngaahi me'a mo'ui 'o 'oseni. Pea 'oku mahu'inga ke tau fakatolonga atu ia ki he to'utangata he kaha'u.

Minerva Reef : Special Management Area:

On Friday 15th October this year, Minerva Reef was officially declared as a Special Management area where marine life will remain preserved and reserved for domestic fishing only under special conditions granted by the Hon. Minister of Fisheries.

Boundaries closed off at Minerva reef are:
(i) *Teleki Tokelau (North Minerva Reef) bounded by an arc 12m in length to delineate the territorial sea around Teleki Tokelau measuring from the seaward low water line of the reef. The said reef positioned by*

the Royal Australian Survey Corps in 1981 on two reference points: 23 degree 38' 11.153" S and 178 degree 56' 28.9903" W and the adjusted station at geographical coordinates 23 degrees 39' 16.7550 S and 178 degree 56' 20.2200" W.

(ii) *Teleki Tonga (South Minerva Reef) bounded by an arc 12m in length to delineate the territorial sea around Teleki Tonga measuring from the seaward low water line of the reef. The said reef positioned by the Royal Australian Survey Corps in 1981 on two reference points: 23 degree 56' 41.3931" S and 179 degree 08' 15.4517" W and the adjusted station at geographical coordinates 23 degrees 55' 46.7660" S and 179 degree 05' 33.7460" W.*



Ko e taha 'eni he ngaahi hakau 'i Tonga ni.

It is anticipated that small vessels less than 11m in length will be granted permits to fish at Minerva and other special conditions such as quota for fishing days will also be considered.

Minerva Reef is unique due to its richness and abundance in marine life. It is essential to sustain this richness for future generation of Tonga.

Uike ki hono sivi e ngaahi fakatau 'anga ika.

Na' e fakahoko 'e he tafa'aki Faipau 'a hano sivi e toutai ta'e fakalao 'oku fakahifo ki he ngaahi matātahi 'o hangē ko Vahe Hahake (Navutoka, Talafo'ou, Kolonga, Afā mo Niutoua), Vahe Hihifo (Kanokupolu, 'Ahau, Kolovai, Ha'atafu) pea mo Nuku'alofa ('elia Uafu Vuna mo Tu'imatamoana), 'i ha 'uike 'e 1 'o kamata mei he 'aho 12—17 Tisema 2005.

'I he 'uike sivi ko 'eni, 'oku kau atu ki ai e ngaahi fakatau'anga ika nga maheni ngaahi Falekai, Motele, Hotele mo e ngaahi fale nofo totongi.

Na' e ngāue fakataha e kau 'ofisa mei he tafa'aki Faipau'pea mo ha timi mei he Potungāue Polisi. 'Oku hoko foki hono toutai'i mai e fanga ki'i 'uo iiki, mo e 'uo 'oku kei 'i ai hono fua'ko ha palopalema vivili ia ki he mo'ui mo e tupu 'a e 'Uo mo hono fa'ahinga.

Ko e lahi taha e faka ki'i 'uo iiki na 'e fakatau atu ia 'i he Uafu Vuna, Tu'imatamoana pea mo e matātahi 'o Navutoka. Ko e lahi taha leva he 'uo paki, na'e puke mai ia mei he ngaahi falekai. Na'e 'ikai 'i ai ha mokohunu, vāsuva pe ko ha 'elili na'e ma'u..

'I he vaha'a ko ia 'o Sanuali ki Novema 2005, na'e puke ai 'e he kau 'inisipekita toutai ha 'uo ta'e fakalao 'e 54 ('uo iiki moe 'uo fua). 'I he 'uike pē ko 'eni 'e 1 na'e fakahoko ai hono sivi e ngaahi fakatau'anga ika, na'e lava 'o puke mai ai e 'uo ta'e fakalao 'e 39, 'a ia ko e 6 mei he ngaahi falekai moe 2 mei he kau toutai.

Ko e ngaahi me'a lalahi na' e a'usia he 'uike mahu'inga ko 'eni, ko hono faka'ilo e mau-maulao 'e 8 fakafehoanaki ia mo e mau-maulao pe 'e 12 mei Sanuali ki Novema 2005.

Ko e taha ia he ngaahi lava me'a lalahi 'o e 'Uike ko 'eni ko e lava ke kau e ngaahi falekai, 'a ia 'oku taitaitaha ke fakahoko ki ai ha ngaue pehe ni. Pea 'oku lava heni ke to e tokanga ange ai e kau toutai, kakai 'o e kolo ka e pehe ki he kau fakatau ika .

INSPECTION WEEK

The Compliance section conducted a one week inspection from the 12th -17th December 2005 for illegal fish landed in coastal areas mainly eastern districts (Navutoka, Talafo'ou, Kolonga, Afā and Niutoua), western districts (Kanokupolu, Ahau, Kolovai, Ha'atafu) and Nuku'alofa (vicinity of Vuna Wharf and Tu'imatamoana).

This Inspection week covered well known fish landing sites, Restaurants, Motels, Hotels, Lodges, Inns, and Resorts.

Officers from the Compliance Section worked in partnership with a team from the Ministry of Police.

Capturing undersized lobsters and those with eggs are a serious threat to their regeneration. Most undersized lobsters were sold at Vuna wharf, Tu'imatamoana and Navutoka seaside.

A number of lobsters with eggs were confiscated from restaurants but no sea cucumbers (beche-de-mer), undersized clams or trochus were found.

During the period Jan 05 –Nov 05 Enforcement officers confiscated 54 lobsters which were undersized and others with eggs. This weeks inspection resulted in confiscation of 39 undersized lobsters from 6 restaurants and 2 fishermen.

The outcome of this week's special inspection was significant where 8 cases were

prosecuted compared to 12 cases prosecuted during January to November.

One of the biggest achievements of the week accounted for involvement of restaurants, a rare occasion. Also awareness in the community, particularly fishers and buyers of fish have also been raised.

Ko e ngaahi 'ata mei he Inspection Week



Ko e pa ika na'e ma'u 'oku nau ngaue'aki e kupenga 'o hoko 'aki e pa ika

OLA LELEI HONO FAKAFANAU 'O E VASUVA.

Ko e taha ia he taumu'a ngaue 'a e Potungae Toutai ke fakaili mo fakatolonga e me'a mo'ui 'o 'oseni. 'I he ta'u kotoa pe 'oku fakahoko ai 'e he tafa'aki Aquaculture 'enua polokalama ngaue ki hono fakafanau 'o e vasuva mo hono fa'ahinga 'o kau atu ki ai mo e 'elili, 'i he 'ulu'i 'ofisi 'i Sopusu.

Na' e ola lelei hono fakafanau e kalasi 'o e kuku, pea 'oku lolotonga tauhi he fakato-ka'anga vasuva 'a e Potungae.

'I he polokalama ni 'oku 'ikai ngata pe 'i hono tufaki ki he ngaahi hakau ke fakaili ai, ka 'oku nau fakakakato mo e fiema'u 'a e ngaahi kautaha uta ika ke hokohoko ma'u pe.

Ministry of Fisheries Potungae Toutai

Ministry of Fisheries
P.O. Box 871
Nuku'alofa
Kingdom of Tonga

Phone: 21 399, 27 799

Fax: 23 891

Email:

losilini@tongafish.gov.to



Ministry of Fisheries in Tonga

'Oku 'oatu e fakamalo lahi ki he tafa'aki ni he ikuna e polokalama ngaue ni.

GIANT CLAM SPAWNING WAS SUCCESSFUL

One of the Ministry objectives and goals is to regenerate and conserve the marine life. Spawning and rearing giant clams species and snails are conducted annually by the Aquaculture Section at Ministry hatchery at Sopusu.

Spawning maxima species reaped better results and currently stocked into settlement tank. This spawning program not only to enhance coral reefs and revive wild stocks, but ensures that supply for aquarium export in Tonga is sustained

We would like to note here the effort and success of this program.



Ko Tonga Tu'iano he hatchery 'a e Potungae 'i Sopusu



Oku matu'aki fiefia 'a e tafa'aki tanaki fakamatala 'a e Potungae ke talitali fiefia ko e, ki he ongoongo faka-kuata 'a e Potungae Toutai ki he Kuata Sepitema 2005.

Kapau 'oku 'i ai ha me'a 'oku mou fiema'u 'o fekau'aki mo ha fakamatala 'i he tohi ni, pea mou fakafetu'utaki mai ki he tu'asila he tafa'aki.

POPOAKI KILISIMASI MEI HE POTUNGAUE TOUTAI

'Oku 'oatu heni ha fakamalō lotohounga'ia mo'oni mei he Sekelitali 'o e Potungae, Dr.Sione Vailala Matoto ki he ngaahi kautaha fakavaha'a Pule'anga, ngaahi sekitoa toutai taautaha, kau toutai kotoa pe he 'otu Tonga ni, ka e pehe ki he kakai 'o e Fonua, na'a tau fengae'aki he ta'u ko 'eni. Ka na'e 'ikai ho'omou tokoni he 'ikai a'usia 'a e visione 'a e Potungae .

Fakataunge ke mou ma'u ha Kilisimasi fiefia mo ha Ta'u fo'ou monu'ia.

CHRISTMAS GREETING FROM MINISTRY OF FISHERIES

On behalf of the Secretary for Fisheries Dr.Sione Vailala Matoto, we wish to extend our sincere thank you to all international companies, all fishing industries, fishermen, and all the people of Tonga, that have worked with us throughout 2005. With your help and support we are closer to achieving our vision. We wish you a Merry Christmas and a prosperous new year.