

Mokohunu ke Toutai'i Komesiale 'i Tonga ni



Actinopyga echinites
Deep-water redfish
Telehea loloto

Wet – 12 cm, Dry – 6 cm



Actinopyga lecanora

Stonefish (Telehea maka)
Wet – 12 cm, Dry – 6 cm



Actinopyga mauritiana

Surf redfish (Telehea kula)
Wet – 12cm, Dry – 6 cm



Actinopyga miliaris

Hairy blackfish (Loli fulufulu)
Wet – 19 cm, Dry – 9 cm



Bohadschia argus
Leopardfish (Matamata)

Wet – 27 cm, Dry – 13 cm



Bohadschia similis
Chalkfish (Finemotu'a)

Wet – 12 cm, Dry – 6 cm



Bohadschia vitiensis
Brown sandfish (Mula)

Wet – 24 cm, Dry – 12 cm



Holothuria atra Lollyfish
Lollyfish (Loli)

Wet – 16.5 cm, Dry – 8 cm



Holothuria coluber
Snakefish (Te'epupulu)

Wet – 30 cm, Dry – 18 cm



Holothuria edulis
Pinkfish (Loli pingiki)

Wet – 16.5 cm, Dry – 8 cm



Holothuria fuscogilva
White teatfish (Huhuvalu Hinehina)

Wet – 32 cm, Dry – 16 cm



Holothuria fuscopunctata
Elephant trunkfish ('Elifanite)

Wet – 35 cm, Dry – 15 cm



Holothuria whitmaei
Black teatfish (Huhuvalu)

Wet – 19 cm, Dry – 13 cm



Holothuria scabra
Sandfish (Nga'ito)

TAPUI KE TOUTAI'I



Pearsonothuria graeffei
Flowerfish (Lomu matala)

Wet – 30 cm, Dry – 15 cm



Stichopus chloronotus
Greenfish (Holomumu)

Wet – 12 cm, Dry – 6 cm



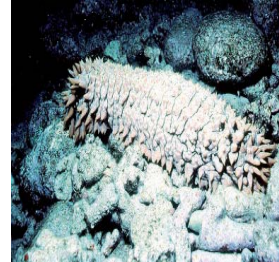
Stichopus horrens
Dragonfish (Lomu)

Wet – 12 cm, Dry – 6 cm



Stichopus herrmanni
Curryfish (Lomu)

Wet – 30 cm, Dry – 15 cm



Thelenota ananas
Prickly redfish (Pulukalia)

Wet – 30 cm, Dry – 12 cm



Thelenota anax
Amberfish (Saieniti)

Wet – 40 cm, Dry – 20 cm